

Tower

TOW-S/B, TOW2-S/B

This cost effective, double sided, free standing tower features a sturdy construction and stylish design. The graphics are held under tension in a curved, eye-catching bubble position. Silver or black side extrusions are available and a backlighting kit is available to turn your tower into a lightbox.




features and benefits:



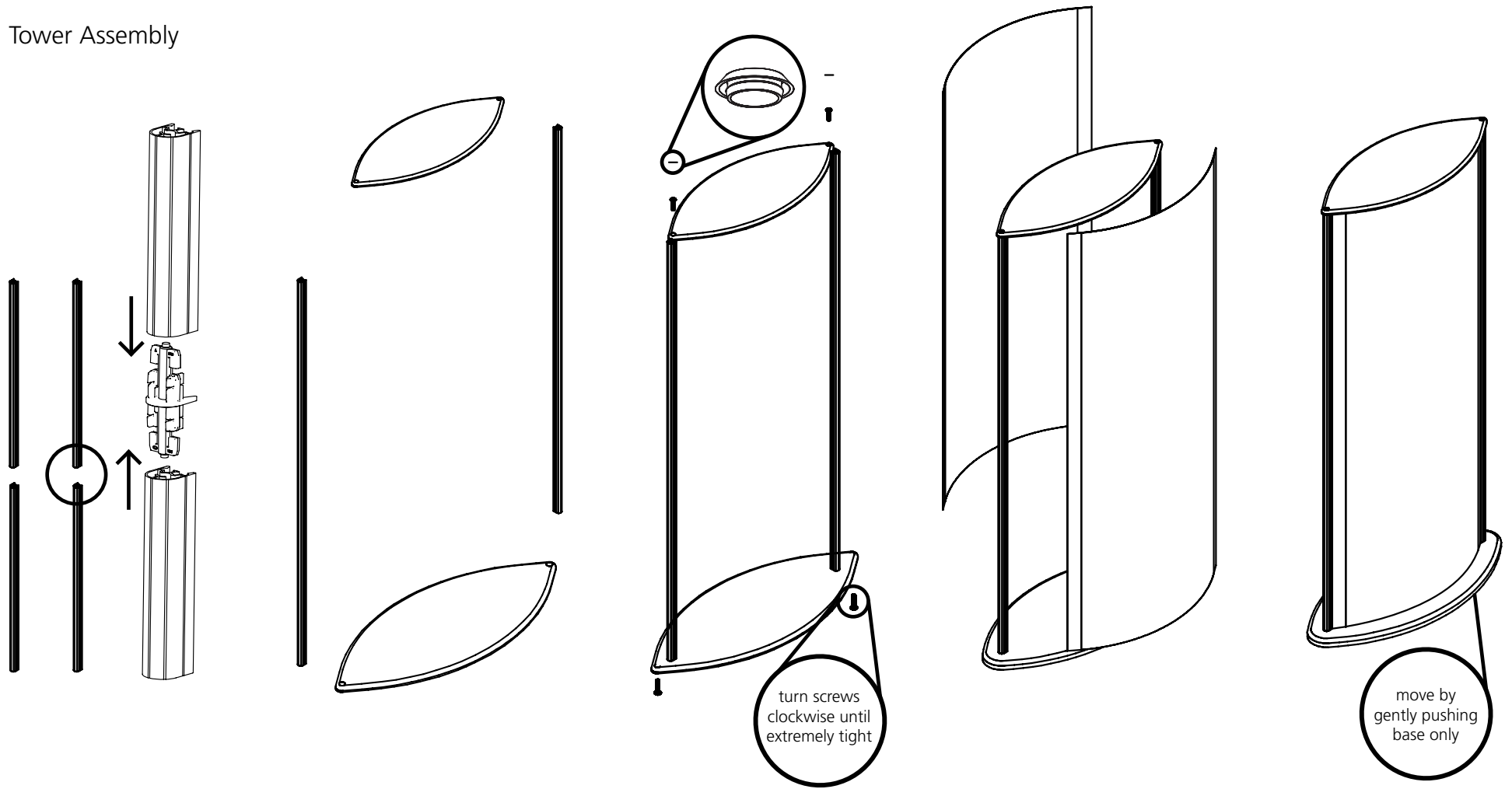
- Quick to set up
- Two widths available
- Lightbox conversion option
- Available in black or silver
- Large graphic display area

dimensions:

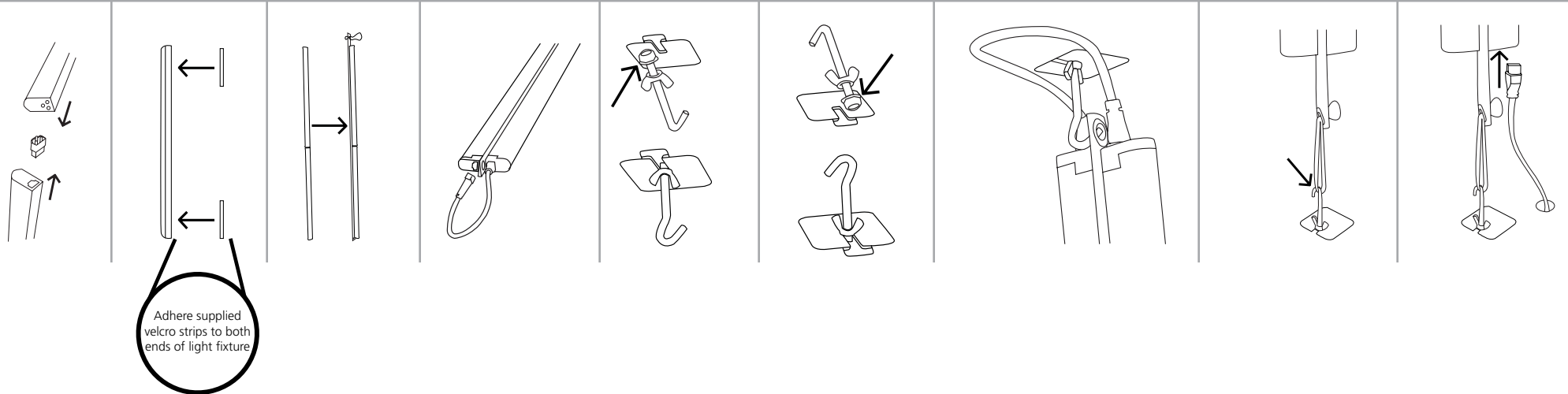
Hardware	Graphic
<p>Assembled unit: TOW: 36" w x 17" d x 73.5" h 914mm(w) x 432mm(d) x 1867mm(h)</p> <p>TOW2: 27" w x 17" d x 73.5" h 685mm(w) x 432mm(d) x 1867mm(h)</p>	<p>Visible dimensions: TOW: 33" w x 72" h 838mm(w) x 1829mm(h)</p> <p>TOW2: 24" w x 72" h 610mm(w) x 1829mm(h)</p>
Shipping	Refer to related graphic template for more information
Shipping dimensions - ships in three boxes	
<p>TOW box 1, Bases: 37" l x 17" w x 3" h 900mm(l) x 450mm(w) x 80mm(h) 16lbs/7.3kg</p> <p>TOW box 2, Uprights: 40" l x 4" w x 3" h 1000mm(l) x 100mm(w) x 80mm(h) 6lbs/2.8kg</p> <p>TOW box 2, Graphics: 15" l x 15" w x 34" h 400mm(l) x 400mm(w) x 850mm(h) 5lbs/2.3</p>	
<p>TOW2 box 1, Bases: 20" l x 3" w x 26" h 500mm(l) x 80mm(w) x 650mm(h) 14lbs/6.4</p> <p>TOW2 box 2, Uprights: 40" l x 4" w x 3" h 1000mm(l) x 100mm(w) x 80mm(h) 6lbs/2.8kg</p> <p>TOW2 box 2, Graphics: 15" l x 15" w x 34" h 400mm(l) x 400mm(w) x 850mm(h) 5lbs/2.3</p>	
<p>Lighting Kit Box: 5" l x 5" w x 33" h 127mm(l) x 127mm(w) x 838mm(h) 33" Tower 66lbs/29.937 kg 24" Tower 64lbs/29.03 kg</p>	
additional information:	
<p>Graphic materials: .040" opaque styrene, .040 translucent PETG</p> <p>Flat head screwdriver needed for assembly</p> <p>Case upgrade: OCP</p>	
	
<p>OCP shipping dimensions - ships in one box 18" l x 26" w x 40" h 457mm(l) x 660mm(w) x 1016mm(h) Approximate shipping weight - case only 32lbs/14kg</p>	

We are continually improving and modifying our product range and reserve the right to vary the specifications without prior notice. All dimensions and weights quoted are approximate and we accept no responsibility for variance. E&OE. See Graphic Templates for graphic bleed specifications.

Tower Assembly



Light Kit Assembly



Check out these related products:



Double Sided Pylon



Three Sided Pylon



Double Sided Info Center



Three Sided Info Center
